

Ashtons

Foss Place Foss Islands Road YO31 7AF

£900 PCM

1



1



1



E

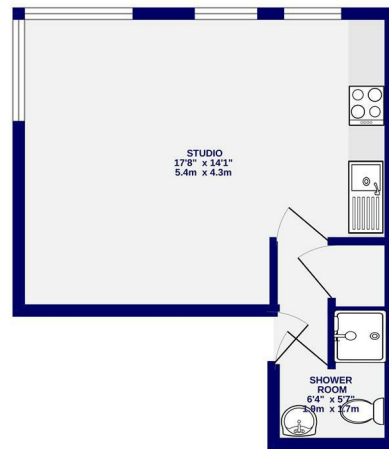


A modern studio apartment located minutes walk from the city centre plus benefitting from allocated parking. Enjoying Minster Views the property is furnished and comprises entrance in to open plan living/ kitchen / sleeping area. The kitchen includes integrated fridge, oven/hob, washer/dryer. Modern shower room. Electric heating. Allocated parking.

Available Now

Council Tax Band A / Initial 6 Month Tenancy / EPC Rating E / Deposit £1000

2ND FLOOR
285 sq.ft. (26.5 sq.m.) approx.



TOTAL FLOOR AREA: 285 sq ft (26.5 sq.m.) approx.
While every effort has been made to ensure the accuracy of the floorplan, measurements of rooms and any other areas are approximate. It should be the duty of the prospective tenant to verify the accuracy of the floorplan. The floorplan is for illustrative purposes only and should not be used as a basis for any prospective purchase. The landlord, agents and approved code trader make no representation or warranty as to the accuracy of the floorplan.



Ashtons Lettings

01904 731404

lettings@ashtonsnet.com

